



CANDLER PARK

*Atlanta's natural  
place to play*

A scenic view of a pond surrounded by lush green grasses and a dense forest of tall trees. The pond is in the foreground, reflecting the surrounding greenery. The trees are tall and leafy, creating a thick canopy in the background. The overall atmosphere is peaceful and natural.

VISION STATEMENT

*As Atlanta's natural place to play, Candler Park will inspire, captivate and connect people to one another and their environment.*

well-used loved  
**potential** festival unused **imaginative**  
**adaptive** communal hidden sub-optimized  
wildlife eroded apathy awkward **neglected**  
unsightly varied neighborhood **diversity** ecologically abused  
amenity fragile dear habitat  
**engaging** unprotected  
rough **isolated** unprotected  
**enticing** green

connected transformative  
beautiful flourishing useful resilient  
playful cared-for layered diverse integrated  
maintained communal healthier landscaped  
nature preserve urban oasis protected refuge  
pleasant wild atlanta's natural playground  
self-supporting community iconic  
natural jewel



Open entire park to a broader range of users while protecting the natural environment.



Integrate environmental sustainability measures throughout the park.



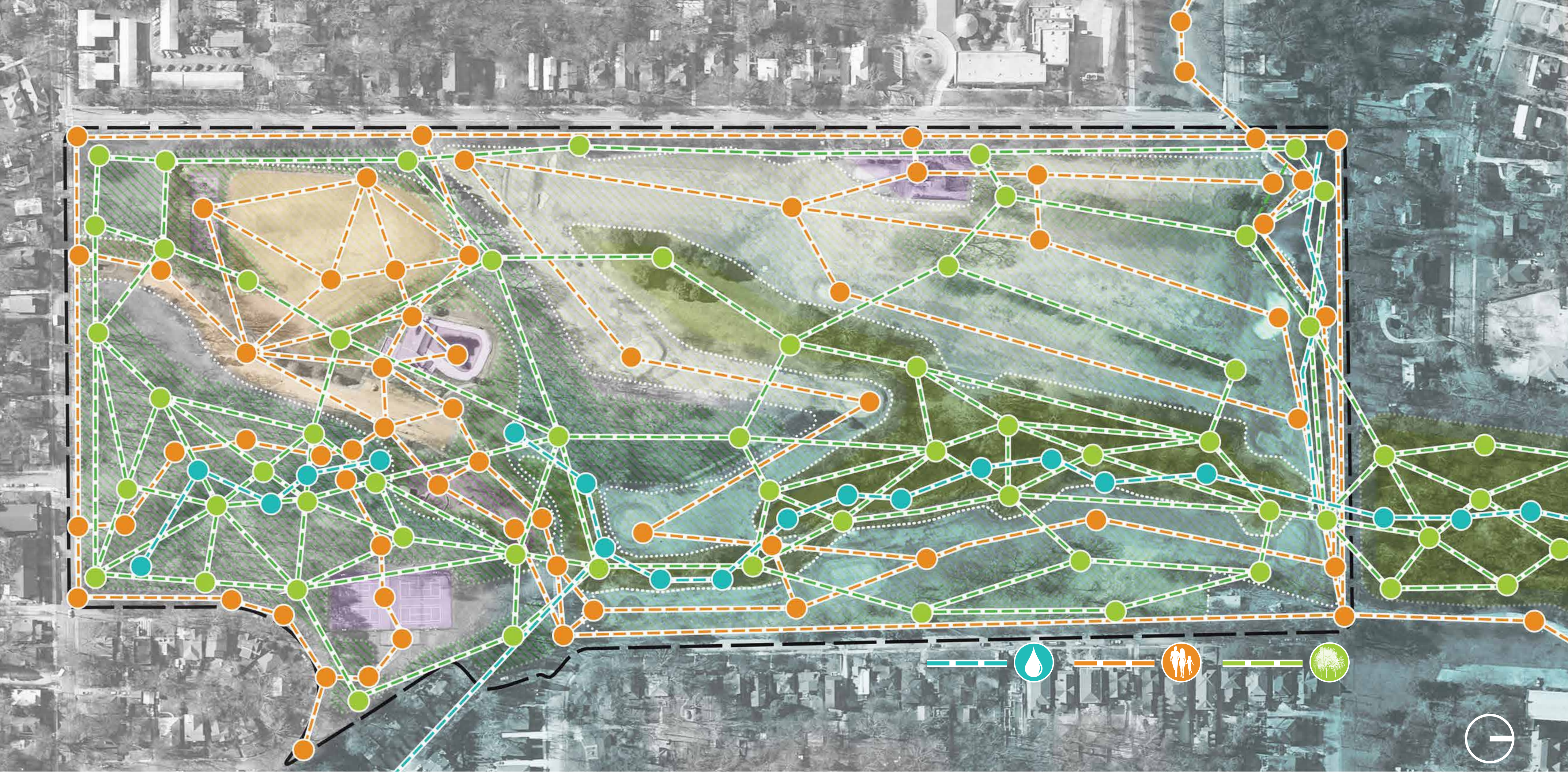
Celebrate Candler Park's rich history and community character.



Incorporate play throughout the park.

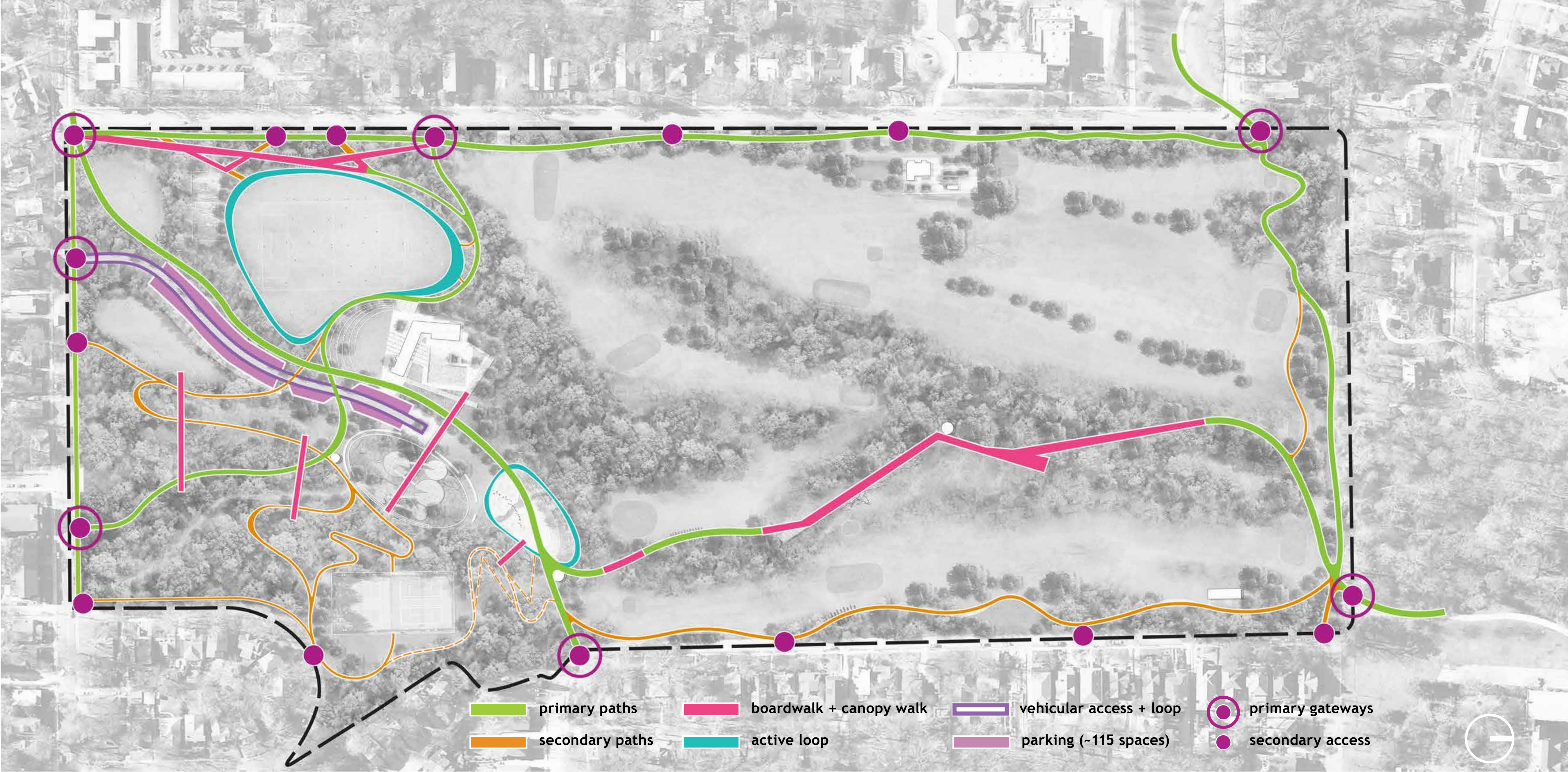


Develop educational opportunities within the park.



candler park today \ overlapping habitats

CANDLER PARK  
*vision plan update*



the vision \ circulation and access

**CANDLER PARK**  
*vision plan update*



the vision \ a plan for *today* and the *future*

CANDLER PARK  
*vision plan update*





the vision \ a plan for *today* and the *future*

CANDLER PARK  
*vision plan update*





the vision \ *engaging* the natural habitat

CANDLER PARK  
*vision plan update*



the vision \ the beaverwalk

CANDLER PARK  
*vision plan update*



the beaverwalk

CANDLER PARK  
*vision plan update*



the beaverwalk

CANDLER PARK  
*vision plan update*



golf fairway

riparian corridor, beaver walk + overlook

the beaverwalk

CANDLER PARK  
*vision plan update*



the beaverwalk

CANDLER PARK  
*vision plan update*



\ *captivate*





the vision \ Atlanta's Natural Place to Play

CANDLER PARK  
*vision plan update*



the vision \ Atlanta's Natural Place to Play

CANDLER PARK  
*vision plan update*



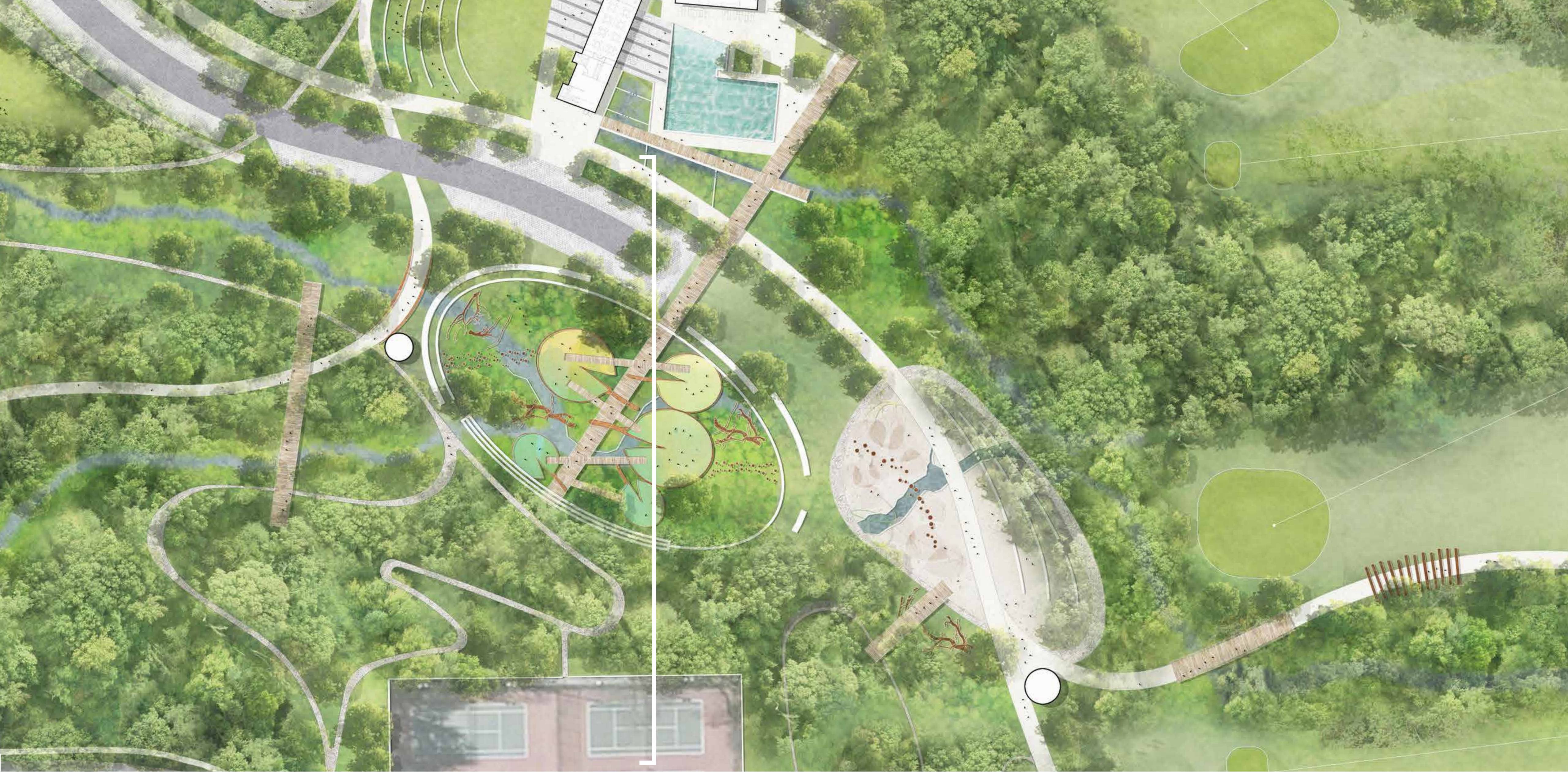
the vision \ Atlanta's Natural Place to Play

CANDLER PARK  
*vision plan update*



the pond

CANDLER PARK  
*vision plan update*



the pond

CANDLER PARK  
*vision plan update*



tennis courts

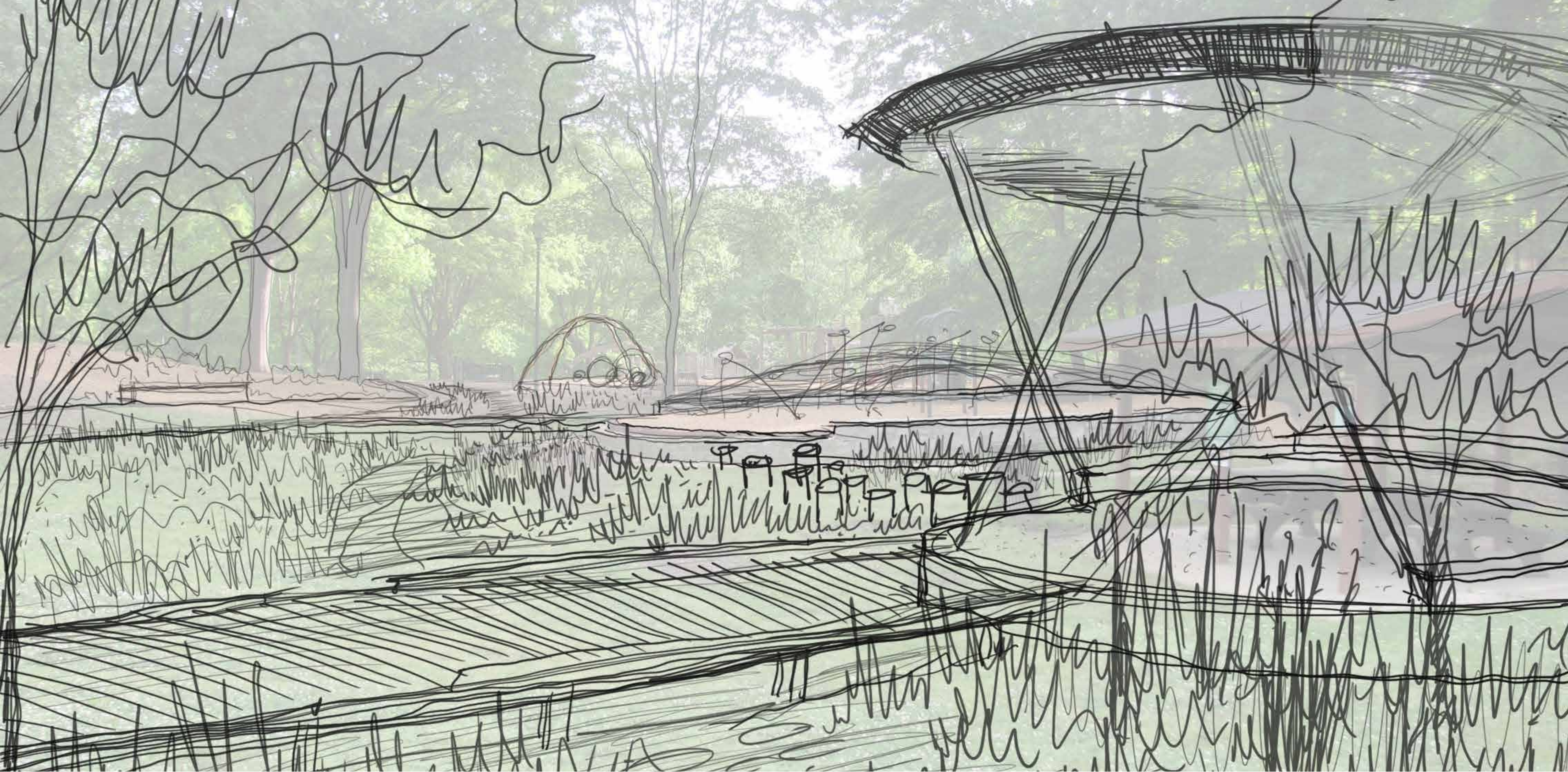
woodland trail

the pond

parking

the pond

CANDLER PARK  
*vision plan update*



the pond

CANDLER PARK  
*vision plan update*



*inspire*





the vision \ connect people to one another

CANDLER PARK  
*vision plan update*



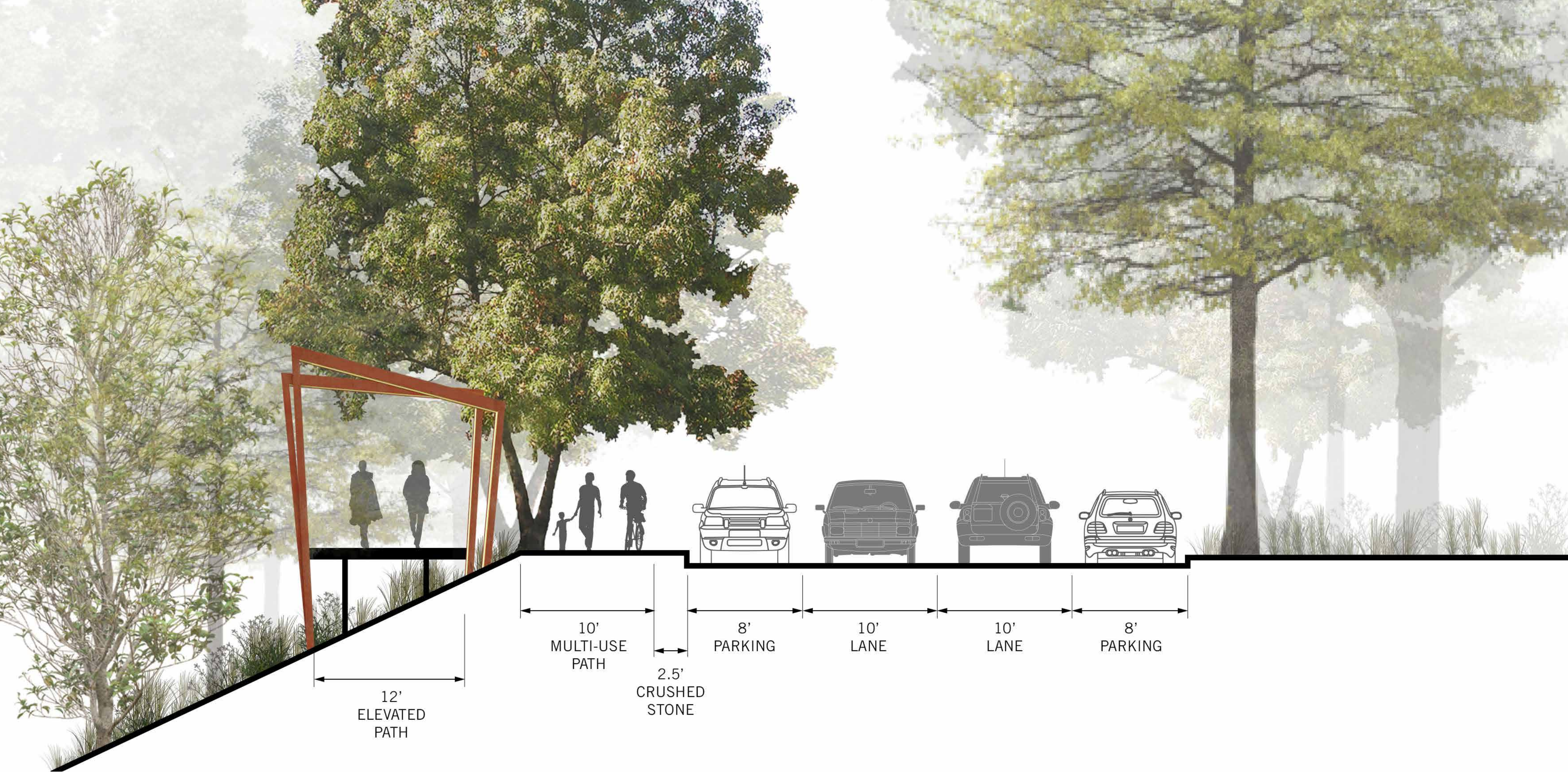
the cliffs

CANDLER PARK  
*vision plan update*



the cliffs

CANDLER PARK  
*vision plan update*



the cliffs

CANDLER PARK  
*vision plan update*



CANDLER PARK | ATLANTA'S NATURAL PLACE TO PLAY

*\ connect*

# materials



wood decking



cable railing



corten



stone walls



wood seating



permeable paving



concrete site walls



crushed stone

# planting



paw paw



redbud



flowering dogwood



southern magnolia



shortleaf pine



american beech



white oak



ironwood



virginia sweetspire



switchgrass



piedmont azalea



blackberry



dwarf st. john's wort



flag iris



goldenrod



elderberry

# key projects

- 1. the beaverwalk
- 2. amphitheater
- 3. the pond
- 4. the cliffs
- 5. active lawn
- 6. the beach
- 7. entry drive + parking
- 8. candler park drive
- 9. golf course
- 10. clubhouse renovation
- 11. poolhouse + pool renovation
- 12. primary paths
- 13. secondary paths + trails





## the beaverwalk

total area: ~64,000 sf

project to include:

- concrete paving on grade, 12' average width (~11,000 sf)
- wood boardwalk with built-in seating and observation areas (~17,500 sf)
- cable railing as needed
- overlook structure
- wooden bird perches
- signage + wayfinding
- lighting

key projects \ the beaverwalk

CANDLER PARK  
*vision plan update*





## the amphitheater

total area: ~17,000 sf

project to include:

- grading to incorporate terraced seating with low walls
- stairway connection
- custom stage with permeable paving or resilient lawn surfacing
- signage + wayfinding
- lighting

key projects \ the amphitheater

CANDLER PARK  
*vision plan update*



## the pond

total area: ~35,000 sf

project to include:

- remove underground pipe and daylight stream
- wooden bridges / boardwalks with custom lily pad play areas
- natural play elements
- rain garden planting
- concrete seating and retaining walls
- site furnishings as needed
- signage + wayfinding
- lighting

key projects \ the pond

CANDLER PARK  
*vision plan update*



## the cliffs

total area: ~40,000 sf

project to include:

- elevated wood boardwalk / observation area, 12' minimum width (~15,000 sf)
- custom corten steel “bramble” as wayfinding gateway
- cable railing as needed
- concrete paving on-grade / ADA connections to park (~5,000 sf)
- integrated hillside seating
- planting + erosion control
- lighting

key projects \ the cliffs

CANDLER PARK  
*vision plan update*



## the active lawn

total area: ~107,000 sf

project to include:

- re-grading existing lawn to mitigate stormwater issues
- reseeding lawn area (~95,000 sf)
- crushed stone, ADA accessible loop around lawn (~12,000 sf)

key projects \ active lawn

CANDLER PARK  
*vision plan update*



## the beach

total area: ~30,000 sf

project to include:

- remove underground pipe and daylight stream
- runnel feature
- natural play elements
- crushed stone paths, sand and/or other permeable surfacing
- concrete seatwalls
- stream buffer restoration and native planting
- signage + wayfinding
- lighting

key projects \ the beach

CANDLER PARK  
*vision plan update*



## entry drive + parking

total area: ~55,000 sf

total parking spaces: ~115

project to include:

- remove and pull back existing parking
- replace parking with permeable pavers or grass-crete
- crushed stone area for events, picnicking, and grill-stations
- signage + wayfinding
- lighting

key projects \ entry drive + parking

CANDLER PARK  
*vision plan update*



## Candler Park Drive

total area: ~65,000 sf

project to include:

- road diet to incorporate minimum 6' path along Candler Park Drive
- restriping, new crosswalks, and art feature
- invasive species management and replanting along edge of Candler Park
- signage + wayfinding
- lighting

key projects \ candler park drive

CANDLER PARK  
*vision plan update*



## golf course

total area: ~950,000 sf

project to include:

- golf course hole realignment per masterplan recommendations
- implementation of meadow planting in strategic areas along edges to reduce mow area
- long-term incorporation of frisbee golf baskets for alternative use of course

key projects \ golf course

CANDLER PARK  
*vision plan update*





## clubhouse renovation

total area: ~42,000 sf

project to include:

- interior renovation of existing golf clubhouse to incorporate club rental, cashier area, concessions, ADA restrooms, and lower level to include locker room as well as community meeting space
- addition of outdoor gathering and viewing terrace / event space and concessions pavillion
- improved putting green

key projects \ clubhouse renovation

CANDLER PARK  
*vision plan update*



## poolhouse + pool renovation

total area: ~35,000 sf

short-term project to include:

- full exterior and interior renovations of existing facility
- ADA, year round restrooms
- small pavillion to connect amphiteather with poolhouse

long-term project to include:

- future LEED or Living Building Challenge certified poolhouse
- zero entry and 5-lane lap pool
- lockers, concessions, dining terraces, and community room

key projects \ poolhouse + pool renovation

**CANDLER PARK**  
*vision plan update*



## primary paths

total area: ~35,000 sf

project to include:

- minimum 12' ADA path for primary walkways
- detectable warning pavers along intersection/edges of vehicular access and roadways
- bridge adjacent to *the pond*
- signage + wayfinding
- lighting

**note:** it is recommended that the two paths be phased accordingly to allow access to the park's core.

key projects \ primary paths

CANDLER PARK  
*vision plan update*



## secondary paths + trails

total area: ~330,000 sf

project to include:

- width varies, to be a maximum of 10' where there are seating areas or overlooks, and a minimum of 3' for foot-trails
- crushed stone or other permeable surfacing
- grading as required

**note:** it is recommended that the paths and trails be phased accordingly to maintain access to the park.

key projects \ secondary paths + trails

CANDLER PARK  
*vision plan update*

*As Atlanta's natural place to play,*  
*Candler Park will become a dynamic,*  
**inspiring gathering place...**





*...where people of all ages can engage  
with the natural habitat...*

celebrate *its rich history,*  
and embrace a **sustainable**  
*future for the park.*

